

IN VITRO DIAGNOSTIC

# ACCELERATE THE SHIFT TOWARDS PRECISION MEDICINE

END-TO-END AI-POWERED DIGITAL PATHOLOGY SOLUTION



# TABLE OF CONTENTS

<b>CONTEXT</b> Trends in pathology	5
<b>NEEDS</b> Multi-disciplinary approaches, precision medicine and straightforward integration with the backbone laboratory system	7
<b>SOLUTION</b> Dedalus end-to-end AI powered digital pathology solution for Anatomical Pathology labs	9
<b>CAPABILITIES</b> An unparalleled set of capabilities driven by our holistic approach to the pathologist needs	11
<b>VALUE</b> Enable the perfect conditions to achieve best in class in your lab and excellence in cancer diagnosis	13
<b>STRENGTHS</b> Leverage AI to accelerate the shift toward precision medicine and patient-centered solutions	15

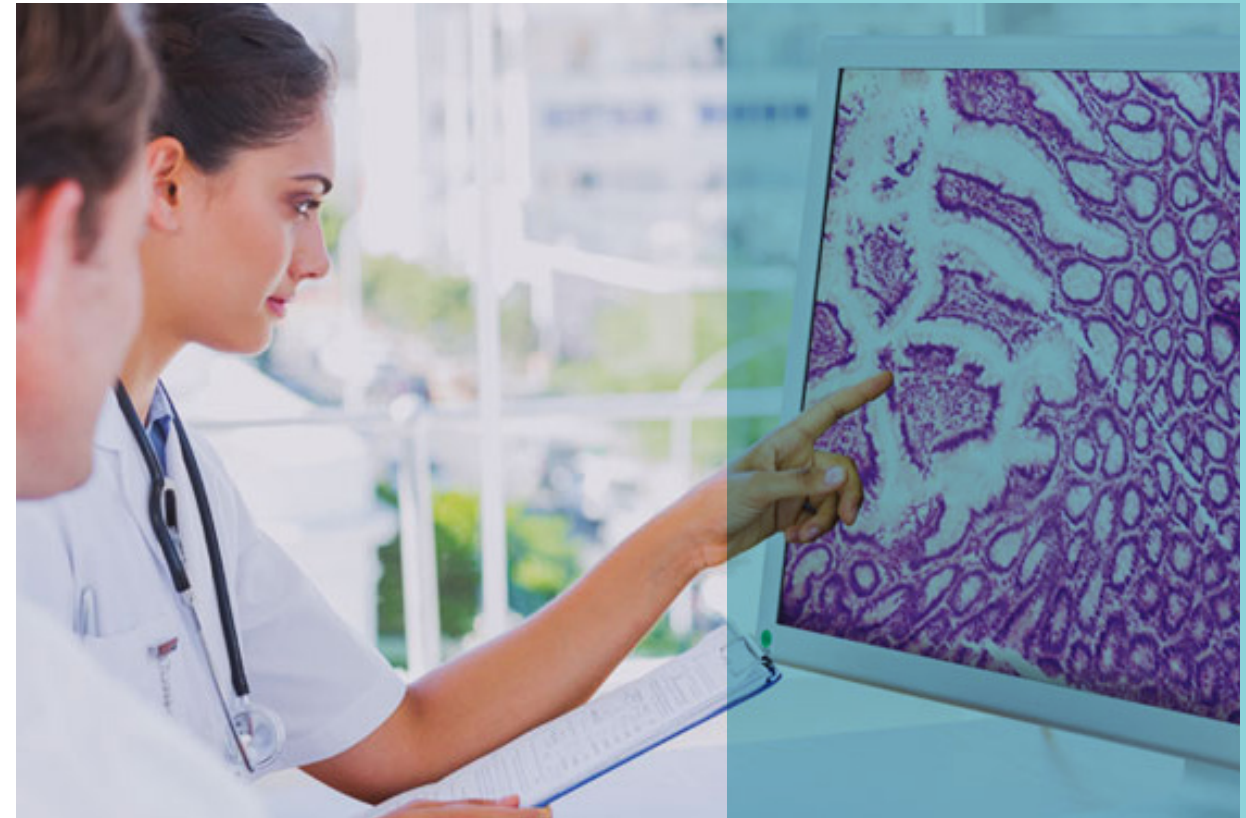


## CONTEXT

# TRENDS IN PATHOLOGY

The **increasing demand for pathology services from an aging population and more cancer patients**, combined with a **shortage of trained pathologists and a multidisciplinary approach**, requires pathology laboratories to actively seek efficiency-enhancing solutions to maintain high accuracy levels and reduce time to diagnosis.

The digital pathology revolution **supports the pathologist** from tissue reception to digital reporting. Effective and efficient diagnostics are crucial today.



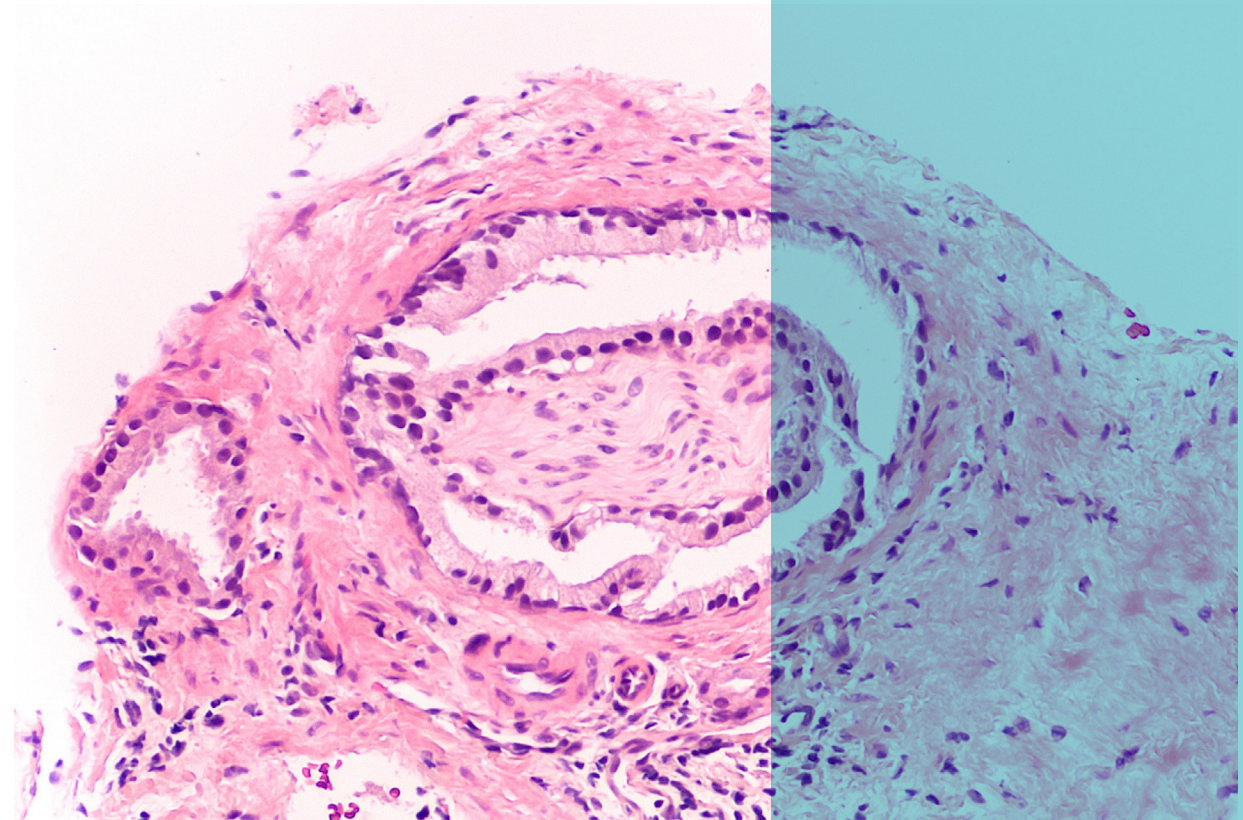
## NEEDS

# MULTI-DISCIPLINARY APPROACHES, PRECISION MEDICINE AND STRAIGHTFORWARD INTEGRATION WITH THE BACKBONE LABORATORY SYSTEM

With the **growing complexity in cancer care**, a **multidisciplinary team approach** and advances in precision and personalized medicine are fundamental to improving patient outcomes.

Through **AI**, more **efficient diagnostic pathways** can be generated to **increase** the **lab's productivity** and **reduce** the diagnostic **TAT**.

**Clinical Decision Support and AI tools** are essential to **improve patient diagnosis** and the healthcare decision-making process.



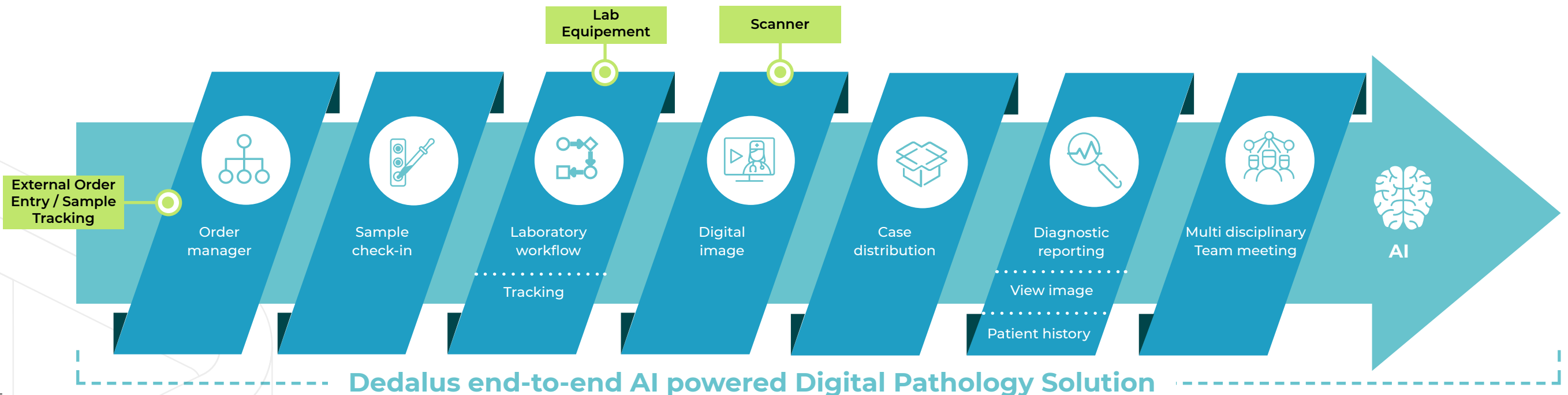
# DEDALUS END-TO-END AI POWERED DIGITAL PATHOLOGY SOLUTION FOR ANATOMICAL PATHOLOGY LABS

Unique, all-in-one integrated digital solution addresses the needs of Anatomic Pathology laboratories through the **seamless full digitalization of the Anatomic Pathology workflow**, from the tissue reception to the digital reporting.

Full-scale **Digital Pathology is truly embedded** in the solution through a straightforward integration with the backbone laboratory system.

**AI solutions** seamlessly integrate into every stage of the solution to:

- analyze cases prior to human pathologists' review to reduce diagnostic TAT
- increase diagnostic accuracy and confidence,
- provide clinical decision support tools that enable focusing on cancerous slides and areas of interest,
- streamline reporting to improve laboratory efficiency.





## CAPABILITIES

# AN UNPARALLELED SET OF CAPABILITIES DRIVEN BY OUR HOLISTIC APPROACH TO THE PATHOLOGIST NEEDS

### A solution to fully digitalize the end-to-end workflow of Anatomical Pathology labs (AIS + DP)

- Vendor-neutral integration
- Ease of use and full connectivity with all types of instruments via middleware solution

### Digital Reporting

- All inclusive, customizable reporting tool designed explicitly for Anatomical Pathology labs
- Strong catalog of already built standard reports
- Utilisation of data to report statistical findings and other KPIs

### Advanced case Atlas: A structured collection of cases and related content supports diagnosis and comparison baseline.

- Structured data
- Attached documents
- Relevant images

### Use of data and AI to support diagnosis, enabling personalized medicine with a special focus on:

- Assisted case prioritization and caseload handling
- Advanced image analysis
- New diagnostic tools to enhance the reproducibility of results

### Multidisciplinary approach via built-in functionality to support MDT meetings and Tumor Boards

- Patient-centric approach and **cross-discipline collaboration**, diagnosis, and reporting via open architecture, allowing for **easy exchange of relevant data** with the rest of the diagnostics areas and other hospitals
- Established networks for easy collaboration and sharing of cases within and outside the hospital organization



### Business Intelligence module

Real-time data dashboard to provide information on the operational trends **to support effective strategic decision making and allow implementation of corrective actions.**

**VALUE**

# ENABLE THE PERFECT CONDITIONS TO ACHIEVE BEST IN CLASS IN YOUR LAB AND EXCELLENCE IN CANCER DIAGNOSIS



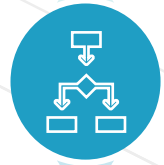
Earlier diagnosis



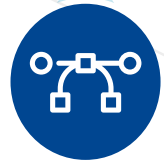
Enhanced quality of diagnosis



Pathologist satisfaction



Seamless full transition to workflow digitalization



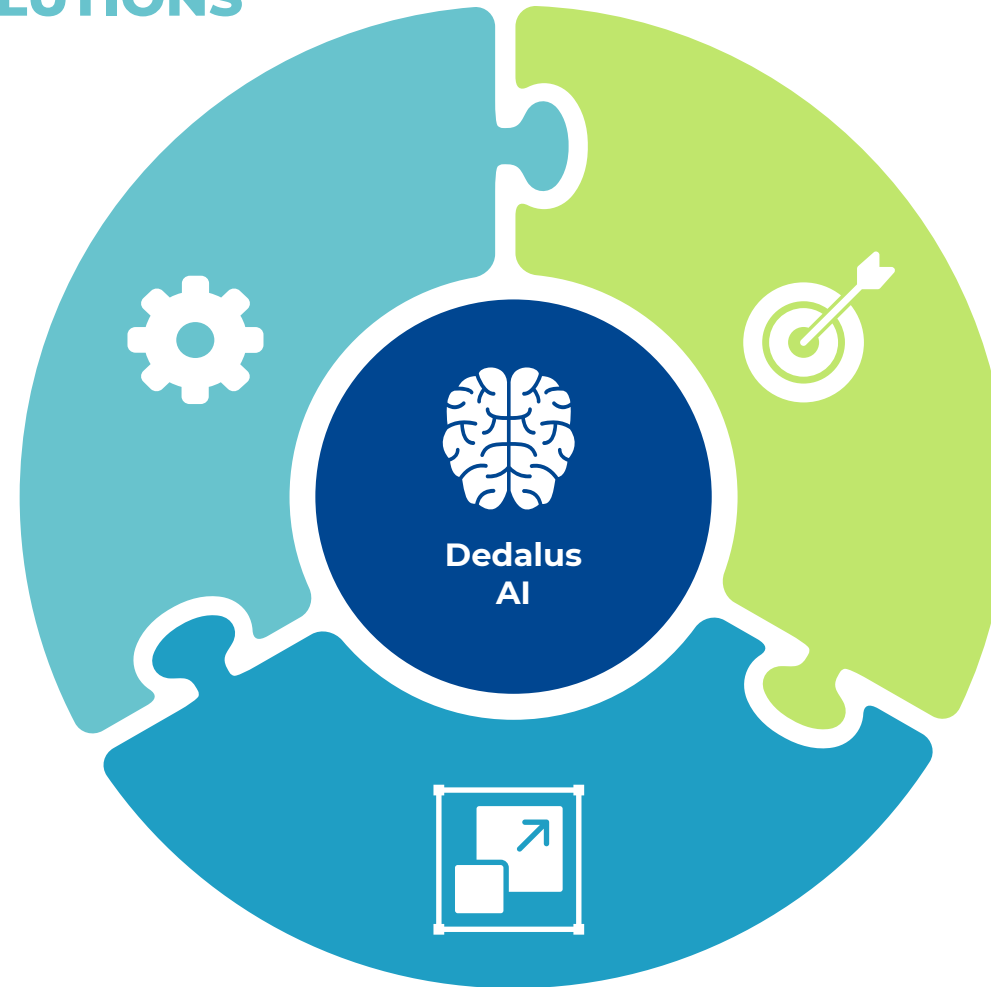
Scalability by design

**STRENGTHS**

# LEVERAGE AI TO ACCELERATE THE SHIFT TOWARD PRECISION MEDICINE AND PATIENT-CENTERED SOLUTIONS

## Reduce diagnostic errors

Enable more objective diagnostic decisions  
Avert unnecessary treatment costs



## Increase diagnostic confidence

Analyse cases prior to human pathologists' review and enable better, fairer, more trusted diagnostic decisions  
Provide decision support tools that enable focusing on cancerous slides and areas of interest

## Enable faster diagnosis

Drive better patient outcomes and save lives, particularly when dealing with highly impacting diseases





# Dedalus

Life flows through our software

#### ABOUT DEDALUS

Dedalus Group is the leading healthcare and diagnostic software provider in Europe, supporting the digital transformation of 6300 hospitals and 5700 Laboratories worldwide, processing its solutions for more than 540 millions of population worldwide. Dedalus supports the whole continuum of care, offering open standards-based solutions serving each actor of the Healthcare Ecosystem to provide better care in a healthier planet.

Life flows through our software.

For more information, visit [www.dedalus.com](http://www.dedalus.com)

[www.dedalus.com](http://www.dedalus.com)