

**OUR PURPOSE
IS TO BE OUR
CLIENTS'
PREFERRED
PARTNER ON
THEIR DIGITAL
TRANSFORMATION
JOURNEY**

"We provide a flexible and efficient software solution, which **empowers the paramedic by bringing the expertise of the organisation directly to the paramedic** and aiming to enhance the focus on the patient by delivering a seamless patient care from emergency to hospital"

Knud Buus Pedersen,
Managing Director
Dedalus Prehospital Solutions

CONTACT US

Sara Di Paola, Clinical Leader International

Tel +39 34 9396 5098

Mail: sara.dipaola@dedalus.eu

Peter Juul, Product Manager

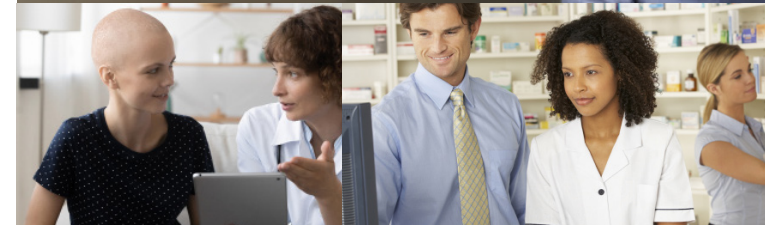
Tel +45 9634 1377

Mail: peter.juul@dedalus.com

Knud Buus Pedersen, Managing Director

Phone: +45 9634 1372

Mail: knud.pedersen@dedalus.com



WELCOME TO
AMPHI



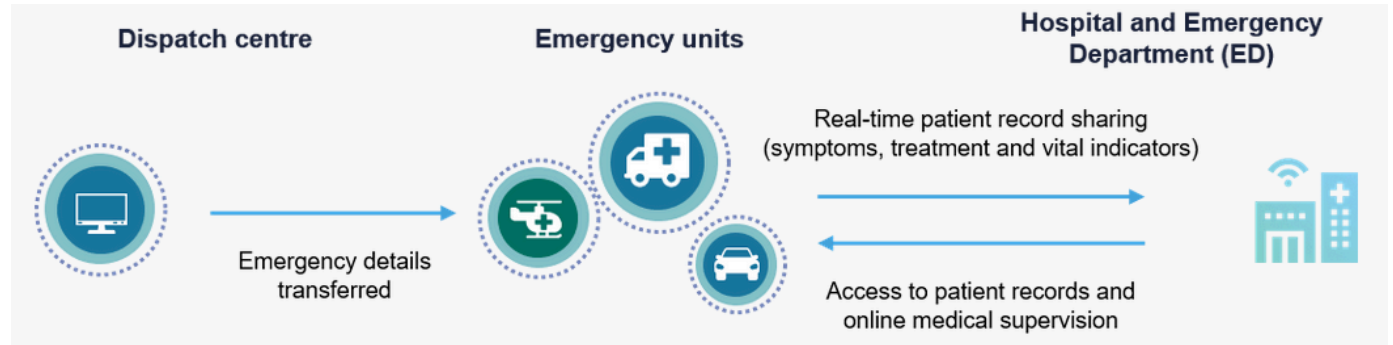
www.dedalus.com/nce/en/



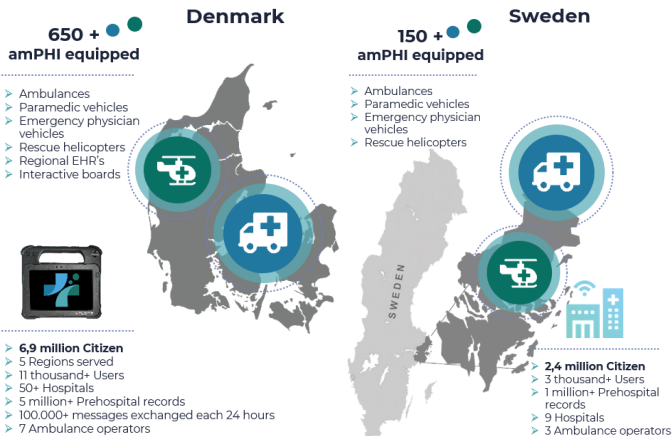
LEARN MORE

WELCOME TO AMPHI

A COMPLETE ELECTRONIC PREHOSPITAL CARE RECORD (ePCR) SOLUTION



PRESENT IN DENMARK AND SWEDEN



INTRODUCING AMPHI

- Leading Nordic provider of unique prehospital software
- Delivers superior products to the prehospital sector
- Working across the whole continuum of care
- Offering Open Standards-based solutions

It is vital to be able to start passing information from the ambulance to the hospital, when an ambulance responds to an accident. With amPHI the ambulance staff has the right tool to start registering patient data already at the scene of the accident or while driving to the hospital.

From time of collection amPHI's prehospital patient record sends information about the patient's condition and initial treatment from ambulance on to the emergency department and medical adviser.

All information about the patient's condition is registered continuously during the prehospital intervention, which helps to ensure a better care process, a faster diagnosis and more effective treatment.

Amphi is the unique solution in the market offering the patient the best possible treatment through a simple and fast collection of relevant patient data as early as possible and communicating it further in the care chain.